



STANDARD EXECUTIONS

- **GN 6342-ST**: black-oxide steel.
- **GN 6342-NI**: AISI 303 stainless steel.

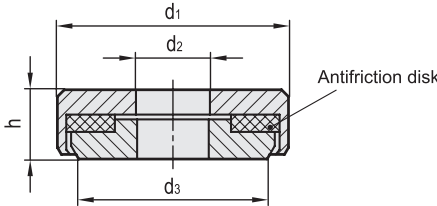
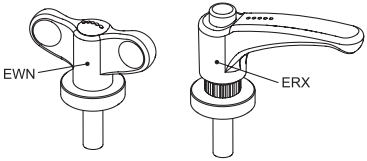
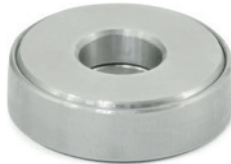
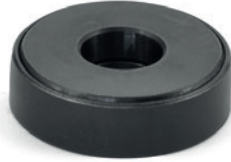
ANTIFRICTION DISK

Glass-fibre reinforced polyamide based (PA) technopolymer, slightly greased.

FEATURES AND APPLICATIONS

GN 6342 washers are used to apply a higher axial force in locking operations.

While tightening, the antifriction disc minimizes the friction between the upper washer, on which the threaded element rests rotating during the clamping operation, and the lower washer that remains firm on the support surface.



GN 6342-ST

| Code | Description | d1 | d2+0.2-0.4 | d3 | h | Screws | ⚖ |
|----------|------------------|----|------------|----|---|--------|----|
| GN.31046 | GN 6342-20-6-ST | 20 | 6 | 16 | 6 | M 6 | 10 |
| GN.31047 | GN 6342-26-8-ST | 26 | 8 | 22 | 7 | M 8 | 21 |
| GN.31048 | GN 6342-28-10-ST | 28 | 10 | 24 | 8 | M 10 | 28 |
| GN.31049 | GN 6342-32-12-ST | 32 | 12 | 28 | 9 | M 12 | 41 |

GN 6342-NI

| Code | Description | d1 | d2+0.2-0.4 | d3 | h | Screws | ⚖ |
|----------|------------------|----|------------|----|---|--------|----|
| GN.31041 | GN 6342-20-6-NI | 20 | 6 | 16 | 6 | M6 | 11 |
| GN.31042 | GN 6342-26-8-NI | 26 | 8 | 22 | 7 | M8 | 22 |
| GN.31043 | GN 6342-28-10-NI | 28 | 10 | 24 | 8 | M10 | 29 |
| GN.31044 | GN 6342-32-12-NI | 32 | 12 | 28 | 9 | M12 | 41 |